

# TWINSTAR LIGHT E SERIES



The new TWINSTAR LIGHT is a new aquarium LED lighting system with full light spectrum and rich and vivid colors. In addition, the LED provides the optimum brightness for plant growth.

Below the new Twinstar LED, the colors of the fish appears more luminous than ever before.

With its full light spectrum and a wide range of wavelengths from 400nm to 700nm, the new LED provides the optimum light for plant growth. The aquarium plants remain healthy and colorful.

The Twinstar Light optimizes and improves the environment for the growth of the aquarium plants and makes the colors of the fish appear more luminous.

Full-spectrum LEDs for optimum color reproduction  
Color Temperature: 7050 Kelvin  
LED Lifespan: 30.000 Stunden  
Operating temperature: -10° - 40°C



MODEL	900ES	600ES	450ES	360ES	300ES
LUMEN	4.700	2.300	1.600	1.100	1.100
CONSUMION OF POWER	66 W	32 W	22 W	17 W	16 W
SIZE	30 mm	60 mm	450 mm	597 mm	899 mm
GLASS THICKNESS	10 mm	6-8 mm	5-6 mm	5-6 mm	5-6 mm
Requirement of tank size	90x45x45 cm	60x30x36 cm	45x27x30 cm	36x22x26 cm	30x18x24 cm

# TWINSTAR Cleaner

The easiest way to clean the twinstar reactor

Increase lifespan period of the TWINSTAR reactor within 30min with the new TWINSTAR Cleaner.



## Frequently Asked Questions

### What is a difference of each TWINSTAR models?

We have two kind of products. One is to inhibit algae in aquarium, and another is to prevent aquarium fish and shrimp from disease.

### Is the IC same for all TWINSTAR models?

IC has different design according to application. Inhibiting algae and to preventing disease have different way so we had to design different model on purpose. Both of disk and IC is all different for intensity and life span.

### How long can TWINSTAR be used?

TWINSTAR can be used continuously for more than 12 months. We also sell Reactor for replacement.

### What is the power consumption?

It is less than 10w/h.

### Do TWINSTAR operate 24 hours a day?

TWINSTAR can operate automatically to On/Off, and operate according to the changeable environment of aquarium.

### Do I need to install additional timer?

TWINSTAR need not install additional timer because it has automatic program.

### Can I put some salt into aquarium?

TWINSTAR may stop operating if it is installed in areas where salt is present.

### How about product warranty?

Consumables (Reactor)'s warranty period is 6 months. The warranty period for Controller is one year.

### No warranty if the following items.

- There are soil dust or Fe on the surface of Reactor. (neglect of maintenance by consumer himself)
- There are calcium on the surface of Reactor.
- Damage to Reactor mesh because consumer using brush and so on.

### How is consumables' lifespan?

If using it in accordance with the instruction manual and clean it once every two weeks, can be used for more than one year.

European  
aquaristics

E.A. european aquaristics GmbH is the official distributor of the TWINSTAR products for Europe, Russia, Poland and Turkey.

E.A. european aquaristics GmbH  
Deichstrasse 189 - 27804 Berne - Germany  
Customer-Service Phone: +49 (0) 41 26 - 39 61 753  
eMail: info@european-aquaristics.com  
www.european-aquaristics.com - www.twinstar-europe.com



More information about TWINSTAR you can find on our YouTube channel.

[www.youtube.com/europeanaquaristics](http://www.youtube.com/europeanaquaristics)



# TWINSTAR

The smart way to inhibit algae and prevent fish and shrimp disease as well as the optimal LED lighting for your aquarium.



# TWINSTAR



## INHIBITION OF GREEN ALGAE

Plant's growth at initial time of planted aquarium and makes balance of aquarium environment quickly



## PREVENTION OF FISH DISEASE

Save your lovely Aquarium fish from disease. It's powerful and smart sterilizer for prevention of fish disease inflow irregularly



## PREVENTION OF SHRIMP DISEASE

TWINSTAR is only solution  
There is no solution to prevent shrimp from a crustacean disease ever

## INHIBITION OF GREEN ALGAE

Plant's growth at initial time of planted aquarium and makes balance of aquarium environment quickly

### TWINSTAR NANO+

Modes	Capacity	Use Reactor
MODE 1	50 to 100 liter	Reactor M9
MODE 2	100 to 200 liter	
MODE 3	200 to 430 liter	

### TWINSTAR NANO

Modes	Capacity	Use Reactor
MODE 1	50 to 100 liter	Reactor M7
MODE 2	100 to 200 liter	

### TWINSTAR M5

Modes	Capacity	Use Reactor
MODE 1	20 to 60 liter	Reactor M5
MODE 2	65 to 120 liter	

### TWINSTAR M3

Modes	Capacity	Use Reactor
MODE 1	20 to 50 liter	Reactor M5

#### Effect on kind of algae

- Hair/Thread algae
- Brown algae
- Blue green
- Fuzz algae
- Green dust algae
- Green spot

## PREVENTION OF FISH DISEASE

Save your lovely Aquarium fish from disease.  
It's powerful and smart sterilizer for prevention of fish disease inflow irregularly

### TWINSTAR YOTTA+

Modes	Capacity	Use Reactor
MODE 1	50 to 100 liter	Reactor M9
MODE 2	100 to 200 liter	
MODE 3	200 to 430 liter	

### TWINSTAR YOTTA

Modes	Capacity	Use Reactor
MODE 1	50 to 100 liter	Reactor M7
MODE 2	100 to 200 liter	

### TWINSTAR S5

Einst Modes	Capacity	Use Reactor
MODE 1	20 to 60 liter	Reactor M5
MODE 2	65 to 120 liter	

### TWINSTAR S3

Modes	Capacity	Use Reactor
MODE 1	20 to 50 liter	Reactor M5

## PREVENTION OF SHRIMP DISEASE

**TWINSTAR** is only solution. There is no solution to prevent shrimp from a crustacean disease ever

### Shrimp

Modes	Capacity	Use Reactor
MODE 1	60 to 100 liter	Reactor M9
MODE 2	100 to 200 liter	

### Shrimp50

Modes	Capacity	Use Reactor
MODE 1	40 to 60 liter	Reactor M5
MODE 2	65 to 120 liter	

### Shrimp30

Modes	Capacity	Use Reactor
MODE 1	40 to 50 liter	Reactor M5

TWINSTAR Shrimp is designed to prevent crustacean disease. Because fish disease is different with crustacean disease about hereditary factor, Shrimp use different way to prevent disease with YOTTA+, YOTTA, S5 and S3. So TWINSTAR Shrimp only be used in shrimp aquarium.

TWINSTAR Shrimp can effectively prevent disease and make safe environment, so baby shrimp can grow healthy. Growth rate of baby shrimp also can be increased.

To some extent, TWINSTAR Shrimp also can inhibit algae in shrimp aquarium.



### REAKTOR M9

NANO+ / YOTTA+  
compatible with TWINSTAR1 Nano/SuperS



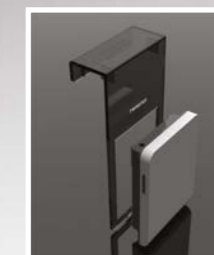
### REAKTOR M7

NANO / YOTTA / Shrimp  
compatible with  
TWINSTAR1 Mini, Mini S,  
Shrimp



### REAKTOR M5

M5 / M3 S5 / S3  
Shrimp50 / Shrimp30



## AQUACRADLE

**AQUACRADLE M-90**  
NANO+ / YOTTA+ / NANO / YOTTA / SHRIMP  
**AQUACRADLE M-30**  
M5 / M3 S5 / S3 Shrimp50 / Shrimp30